

**Anti-Human IgG F(c) (Alkaline Phosphatase Conjugated) Secondary Antibody**  
**Rabbit Polyclonal, Alkaline Phosphatase (Calf Intestine)**  
**Catalog # ASR2700****Specification****Anti-Human IgG F(c) (Alkaline Phosphatase Conjugated) Secondary Antibody - Product Information**

Description	<b>Anti-HUMAN IgG F(c) (RABBIT) Antibody</b>
Host	<b>Alkaline Phosphatase Conjugated</b>
Conjugate	<b>Rabbit</b>
Target Species	<b>Alkaline Phosphatase (Calf Intestine)</b>
Reactivity	<b>Human</b>
Clonality	<b>Human</b>
Application	<b>Polyclonal</b>
Application Note	<b>WB, E, IC</b>
	<b>ELISA 1:2,000-1:10,000;Western Blot</b>
	<b>1:500-1:2,500;Immunochemistry</b>
	<b>1:200-1:1,000</b>
Physical State	<b>Liquid (sterile filtered)</b>
Host Isotype	<b>IgG</b>
Target Isotype	<b>IgG F(c)</b>
Buffer	<b>0.05 M Tris Chloride, 0.15M Sodium Chloride, 0.001M Magnesium Chloride, 0.0001M Zinc Chloride, 50% (v/v) Glycerol; pH 8.0</b>
Immunogen	<b>Anti-Human IgG F(c) was produced by repeated immunization with Human Fc fragment in rabbit.</b>
Stabilizer	<b>10 mg/mL Bovine Serum Albumin (BSA) - Immunoglobulin and Protease free</b>
Preservative	<b>0.1% (w/v) Sodium Azide</b>

**Anti-Human IgG F(c) (Alkaline Phosphatase Conjugated) Secondary Antibody - Additional Information****Shipping Condition**

Wet Ice

**Purity**

Anti-Human IgG F(c) was prepared from monospecific antiserum by immunoaffinity chromatography using Human IgG coupled to agarose beads followed by solid phase adsorption(s) to remove any unwanted reactivities. Assay by immunoelectrophoresis resulted in a single precipitin arc against anti-Alkaline Phosphatase (calf intestine), anti-Rabbit Serum, Human IgG, Human IgG F(c) and Human Serum. No reaction was observed against Human IgG F(ab')<sub>2</sub>.

**Storage Condition**

Store vial at 4° C before opening. DO NOT FREEZE. This product is stable at 4° C as an undiluted liquid. Dilute only prior to immediate use. Freezing alkaline phosphatase conjugates will result in a substantial loss of enzymatic activity.

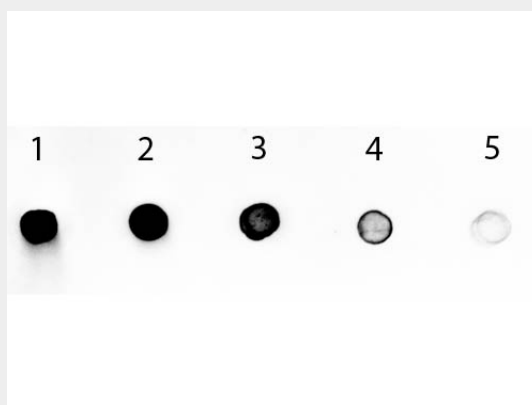
**Precautions Note**

This product is for research use only and is not intended for therapeutic or diagnostic applications.

**Anti-Human IgG F(c) (Alkaline Phosphatase Conjugated) Secondary Antibody - Protein Information****Anti-Human IgG F(c) (Alkaline Phosphatase Conjugated) Secondary Antibody - Protocols**

Provided below are standard protocols that you may find useful for product applications.

- [Western Blot](#)
- [Blocking Peptides](#)
- [Dot Blot](#)
- [Immunohistochemistry](#)
- [Immunofluorescence](#)
- [Immunoprecipitation](#)
- [Flow Cytometry](#)
- [Cell Culture](#)

**Anti-Human IgG F(c) (Alkaline Phosphatase Conjugated) Secondary Antibody - Images**

Dot Blot of Human IgG Fc Antibody Alkaline Phosphatase Conjugated. Antigen: Human IgG Fc Load: Lane 1 - 100ng Lane 2 - 33.33ng Lane 3 - 11.11ng Lane 4 - 3.70ng Lane 5 - 1.23ng Primary antibody: n/a Secondary antibody: Human IgG Fc Antibody Alkaline Phosphatase Conjugated at 1:1,000 for 60 min at RT. Block: MB-070 for 60 min at RT. Visualized using Alkaline Phosphatase Substrate.

**Anti-Human IgG F(c) (Alkaline Phosphatase Conjugated) Secondary Antibody - Background**

Human IgG F(c) antibody generated in rabbit detects specifically Anti-Human IgG F(c) fragment. This secondary antibody anti-Human IgG F(c) is ideal for investigators who routinely perform ELISA, Sandwich ELISA, titration assays, western-blot, immunoprecipitation and more generally immunoassays.